

REMOTE SENSING APPLICATION ON NATURAL DISASTERS

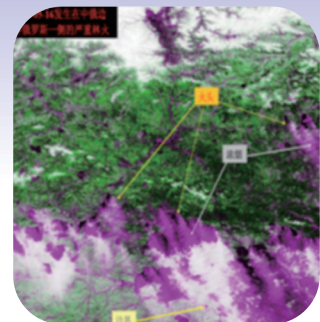


Natural disasters, such as tsunamis, floods, earthquakes, fires and debris flows have caused serious damages worldwide. They can happen anywhere, anytime, in any place, often inevitable and hard to predict. Remote sensing technology can be used to predict certain kinds of disasters, monitor their progress and help to relieve the damages and the post-disaster reconstruction process .

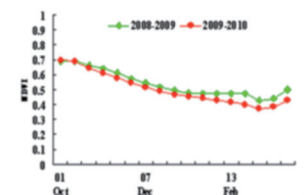
OUR PROPOSAL

SSTC has long experience giving support to Chinese government's institutes such as Meteorological Administration and State Seismology Bureau. We can provide professional thematic maps and analysis of data services worldwide with the highest quality in the required frame time.

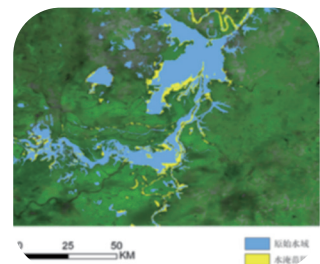
SSTC's systems will help you to get all the information to be able to manage a disaster situation better, and even prevent it. We offer services that can predict the potential, including the time range and scale; make disaster monitoring more timely and accurate, and monitor almost every kind of disasters, especially floods, droughts and earthquakes. As well our services and products will help you in the assessment of disaster damage, planning and progress monitoring of post-disaster reconstruction .



Disaster monitoring



Disaster evaluation



Post-disaster reconstruction

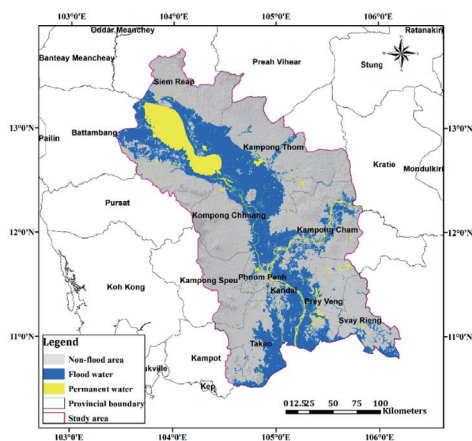
REMOTE SENSING APPLICATION ON NATURAL DISASTERS



BASIC CONFIGURATION

- Fire monitoring
 - Fire monitoring
 - Fire spot analysis
 - Burned area evaluation
- Flood monitoring
 - Water extraction
 - Flood area monitoring
 - Flood depth monitoring
- Debris monitoring
 - Debris flow trend monitoring
 - Debris flow regional planning
- Drought monitoring
 - Soil moisture monitoring
 - Surface evapotranspiration estimation

In 2013, the remote sensing satellite Landsat-8 is used to monitor the situation of flood disaster and help the government to alleviate the disaster and transfer population in Cambodia.



SERVICE

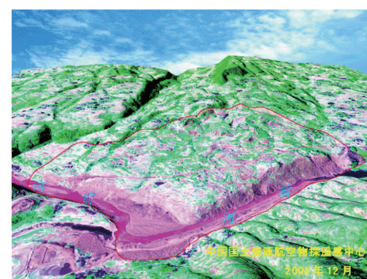
- Dynamic monitoring
- Large-scale disaster monitoring
- Get more disaster information
- Extract disaster information efficiently from available information

PERFORMANCE

- Thematic product production capacity: 50 scenes/day;
- Product customization of GB grade
- Configuration and analysis of xml file.
- Support data formats: GEOTIFF, ERDAS IMG, SHP.



Before the disaster of Tiantai



After the disaster of Tiantai